



# Ragchew

“The Voice of Branch 68”

July 2016

The North Canterbury Amateur Radio Club Inc.  
PO Box 14, Woodend 7641



[www.ncarcinc.weebly.com](http://www.ncarcinc.weebly.com)

Meetings are held at the Woodend Youth Centre, unless otherwise advised.



QTH

## CLUB CALENDAR

Meetings start at 1930hrs, unless otherwise stated.

### Host for July - ZL3RCK

July 14 General Meeting - “Show & Tell” bring something along!

**\*\*Mid-Winter Dinner - Sunday August 7th @ 1200hrs. Garden Restaurant, Shirley\*\***

### Branch 01 Ashburton

July 11 General Meeting - Dick ZL3ADP is host

### Branch 05 Christchurch

July 6 General Meeting - “Contesting can be Cool” by Mark ZL3AB  
21 Day meeting (1300hrs) “HKØNA - Malpelo Island DXpedition” DVD

### Branch 56 Christchurch West

July 13 Free & Easy (1330hrs)  
26 General Meeting

### CARDS

July 20 General Meeting

## Nets and Frequencies

**Canterbury 2M SSB Net** 144.200MHz every Tuesday from 2000hrs (vertical polarisation)

**Canterbury 6M Net** 3850 6M Repeater Thursdays from 2000hrs (vertical polarisation)

**Canterbury Area Net** 5625 Repeater, 2000hrs on Sundays

**National Broadcast** last Sunday of the month at 2000hrs on 3.900MHz, National System, 6975 and 705 Repeaters

*Secretary: Colin Rowe ZL3COL Phone 03 313 2303 Email: [colingr@xtra.co.nz](mailto:colingr@xtra.co.nz)  
Editor: Tony Buckland ZL3HAM Phone 03 312 5352 Email: [zl3ham@scorch.co.nz](mailto:zl3ham@scorch.co.nz)*

# BAYLEYS

WHALAN AND PARTNERS LTD, BAYLEYS, LICENSED UNDER THE REA ACT 2008.

Thanks to **BAYLEYS** for sponsoring  
the photocopying of the newsletter.

**Tel: 03 311-8020**

## President's Report

Well what a great conference we had! I was privileged to have a small part in the organising committee, with a lot of the work being done by others. A great turnout, good speakers and a good meal both evenings made for an enjoyable time catching up with fellow amateurs around the country.

On a local level, I have been enjoying the "ZL Winter Sprint Series" organised by Mark ZL3AB. A 1 hour competition on 40 M, 1/2 hour CW and 1/2 hour SSB on Tuesday nights for six weeks. We just had our third week and conditions were average, but still a lot of fun.

We had a good turnout at the last club meeting, which was pleasing to see. If anyone has any suggestions for meetings/visits, please let myself or a committee member know.

I hope this unseasonably warm weather we are having at the moment doesn't have consequences later in the year. That's all from me this month, stay warm and dry and I'll see you at the next meeting.

**73 Don ZL3DMC**

**Mid-Winter Dinner - Sunday 7th August @ 1200hrs**  
**Garden Restaurant, Marshland Road, Shirley**

**Please let Don know if you wish to attend, all are welcome.**

## AREC Report

Nothing to report and nothing coming up.

**Don ZL3DMC**  
**Section Leader**

## Repeater Reports

### Mt. Noble 6975



Seems to be a great signal at my place so the antenna may have shifted a little my way. Doesn't seem to have had much interference lately.

**Mike ZL3AKZ**

### Mt. Grey 675

The repeater is working well with no known issues.

**Geoff ZL3QR**

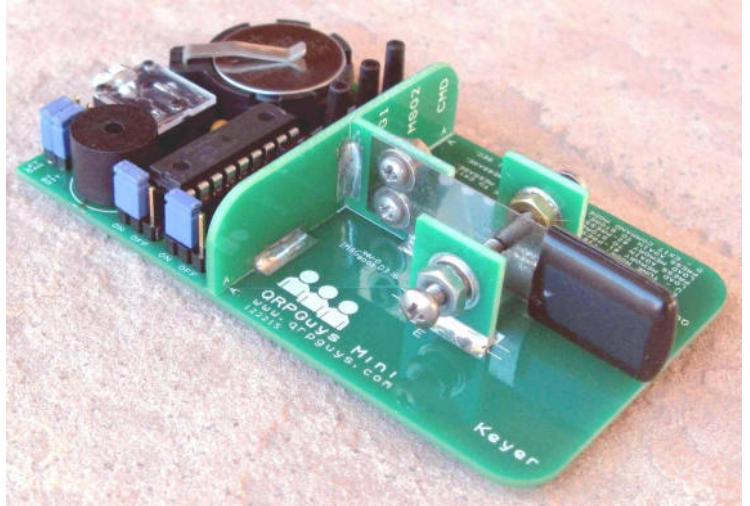


# Single Lever Keyer/Paddle

<http://www.qrpguys.com/>

*QRPGuys Single Lever Keyer/Paddle - US\$25*

The QRPGuys Mini Keyer/Paddle is the perfect companion keyer for portable or field operations where you don't want to take your expensive and heavy paddle into the wilds. We have a design that incorporates the mechanical base for the paddle and the electronics of the keyer, into a single unit. It is a basic keyer with a single lever paddle on a small pc board (3.50"L x 2.00"w x .62"H). Lightweight at only 43 grams (1.5oz.), it uses a common lithium CR2032 coin battery powered (not supplied) for extended usage (1mA active, 1uA standby), virtually the shelf life of the battery.



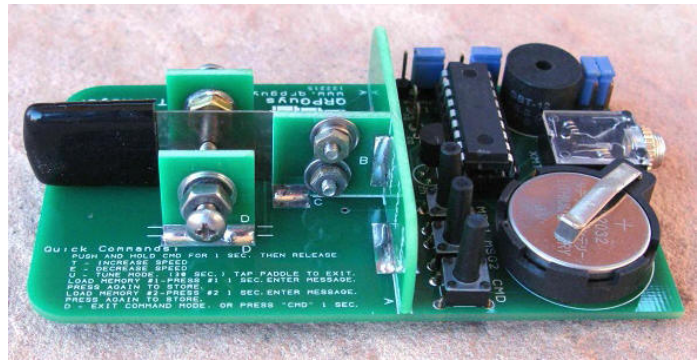
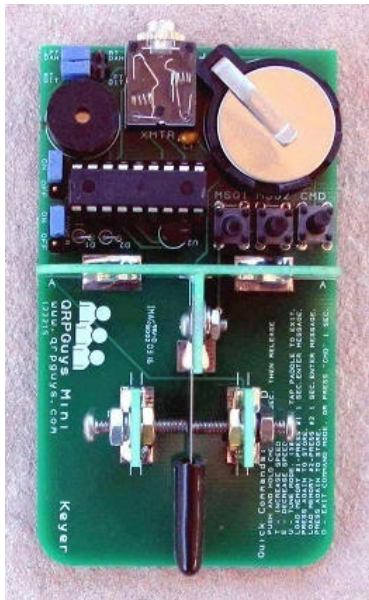
The keyer has an adjustable speed from 6WPM-45WPM in 31 increments. The speed setting is stored in the PIC EEPROM, so it is not lost if you move the power jumper to "off", or change the battery. There are two programmable memories at (63 and 55 characters), continuous playback mode (beacon), and a 30 second "Tune" mode, that can be stopped by tapping the paddle. The PIC16F628A program is in the public domain and available for modification. The PIC chip is in a socket, not locked, and can be easily re-programmed.

There is an onboard piezo speaker for rigs without side tone, which can be jumper disabled for those rigs that do. The dit/dah/right/left selection header is jumper selectable on board. We provide a "power on" header and jumper for storage and transport to prevent accidental activation.

The paddle is a single lever design with all stainless steel lever and contact hardware. Contacts are threaded for a wide range of adjustment from a few thousandths of an inch to whatever you feel comfortable with for sending. You use the 3.5mm stereo jack for connection to your rig.

You construct the project from the supplied routed PCB pieces when soldered, form a strong mechanical assembly. The electronics portion uses all through hole components. The tools required are a soldering iron with a

small tip, rosin core solder, #1 Phillips screwdriver, needle nose pliers, small side cutters, tweezers for the hardware, and a flat surface to work on. Allow a couple of hours to build. On a difficulty scale of 1 to 5, 5 being the most difficult, this is rated at 3.



*(Ed. I built one of these and it works very well, not sure if it will improve my CW though but it was fun to build).*

*Tony ZL3HAM*

*Man Up &  
Get Checked!*



Prostate Cancer  
Foundation  
of New Zealand

PHONE 0800 477 678  
EMAIL [info@prostate.org.nz](mailto:info@prostate.org.nz)  
WEB [www.prostate.org.nz](http://www.prostate.org.nz)

## July Meeting

Last month we will had a Conference de-brief from Don then we enjoyed a DXpedition DVD, HKØNA Malpelo Island.

This month will be a “Show & Tell” so bring along something interesting you have or have constructed and tell us all about it.



**\*\*July Happy Birthday's\*\***

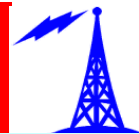
Denise ZL3HI  
Jim ZL3AGS  
Owen ZL3GM





# COM-CENTRE (CE) Ltd

## For All Your Amateur Radio Equipment



**NZ's LARGEST DISTRIBUTOR of AMATEUR RADIO EQUIPMENT for over 20 YEARS**

**Yaesu's Latest Prestige HF Stations FT2000, > H/V/UHF Transceivers FT897 FT857 FT817 NEW DEDICATED HF Base Stns FT950 & FT450**



**FT857**  
H/V/UHF  
100W  
Mobile  
Portable



**Mobile - Base V/UHF FM Transceivers**

**FT1802** Latest VHF FM Deluxe Mobile  
**FT7800** Extended Cov V/UHF Mob/Base  
**FT8800** Deluxe V/UHF True Twin Bander  
**FT8900** Deluxe Quad-Bander 10M-70cm



**FT450**  
DSP-100W  
HF + 6M  
Base/Port



**Wide Band Hand-Helds & Scanners**

**VX6 & VX7 Deluxe WideBand Handies**  
**VX2R Deluxe Wide-Band Micro H'held**  
**FT60R** Mil-Spec Ext cov V/UHF  
**VX170** Extended coverage VHF Hand-Held  
**VX177** Extended coverage UHF Hand-Held  
**VR500** Multi-Mode Wideband Receiver  
**VR120D** Economical V/UHF Scanner



**Accessories & Options**

Power Supplies, Antenna Rotators + stocks of options, spare batteries, accessories and full service support for all Yaesu/Vertex Std Equipment



**DIAMOND'S PROVEN, POPULAR and PREFERRED ANTENNAS & ACCESSORIES**

- X50, X300, X510M** Fibre-glass encapsulated co-linear arrays for V/UHF Base Station antennas c/w mounting hardware **from \$175**
- SGM 911 Tri-Band mobile** Deluxe Slim-line mobile for 6,2 & 70 transceivers (also perfect on 75MHz for Scanners) **only \$195**
- NR-770/790** - Ground independent  $\frac{1}{2}\lambda$  on VHF, multiple  $\frac{5}{8}\lambda$  on 70cm with SO239 base for optimum mobile performance **from \$65**
- NR22L** Optimum 2M DX Mobile Co-linear  $2 \times \frac{5}{8}\lambda$ , 2.46M long, 6.5dB gain \$ 95. **NR2C** Std  $\frac{3}{4}\lambda$  Centre-loaded 2M Mobile **only \$80**
- SRH 701/771 SMA FLEXI-Whips** specifically for Broad-band freq coverage and gain on Hand-Helds or Scanners **from \$45**
- RH205 / RH799 Telescopic Whips** for DX coverage with Scanners or wide coverage Hand-Helds, BNC mounts **from \$45**
- DP-CP22L VHF Base Vertical** Omni-Directional for VHF Dxing,  $2 \times \frac{5}{8}\lambda$  co-linear, 2.7M long, over 6.5dB gain on 2M **only \$120**
- DP-CP6 6 Band HF Vertical** 4.6M long, preferred limited space array including radials (1.8ML) 80 - 6M coverage **only \$1195**
- W735 Wire Dipole Kit** 80/40M trapped dipole, 26M long includes all traps, balun, wire elements, insulators and ties **only \$250**
- W80-10 Dipole Kit** covers 80,40,20,15,10M under 20M long includes all traps, balun, wire elements, insulators and ties **only \$395**
- D130 Discone** covers 25-1300MHz 1.7M long includes all mounting hardware and 15M low loss coax cabling **only \$295**
- KV5** The Latest HF-6M DX Vertical-Top performance in limited space - **only 5.8M long, <3kg for simple installation only \$875**
- BB6W** Wire Dipole equivalent of BB7V complete coverage 2-30MHz **only 7M long incl all wire, balun, insulators only \$575**
- WD330S** 10M Long BroadBand T2FD for full 2-30MHz coverage, icomplete kit incl Balun, Spreaders, insulators etc **only \$569**
- WD330** Full 25M Terminated Folded Dipole kit (as above) **\$625 PLUS OTHER HF ANTENNA OPTIONS for all situations**

**DIAMOND HIGH QUALITY MOBILE EXTENSION SPEAKERS**



**P810A** 77mm speaker with built in Amp, volume control and noise filter  
Supplied with Cig Lighter DC input. Perfect for HH or Scanners **ONLY \$90**  
**P810** as above, but excludes built in amp, Has noise filter **ONLY \$59**  
**P610** 55mm extrn speaker with magnetic mounting base **ONLY \$45**

**NEW MK3 MODEL Bhi DSP Speaker**  
**\$395**



**Diamond Professional SWR Meters**

**SX200 HF/VHF \$240 SX20 HF/VHF \$245**  
**SX400 VHF/UHF \$295 SX40 V/UHF \$250**



**AoR Professional Receivers & Scanning Monitors**



**MFJ's ANTENNA TUNERS & STATION ACCESSORIES**

**MFJ993B** Fully Auto, Totally versatile **\$749**  
**MFJ 971** New, deluxe 200W Tuner **\$350**  
**MFJ 948** Versatile tuner with ant sw **\$459**  
**MFJ901b** Fully featured Mini-tuner **\$ 289**  
**Plus other models to suit specific needs**



**+ so much more:** As ZL's largest supplier of Amateur radio equipment we maintain good stock levels of all those extra items that enable you to enjoy operating your Amateur station. **Antennas** all bands, base, mobile, portable or Hheld whips **Batteries** Spare Yaesu Nicads, NiMH or LiIon cells **Coax & Cabling** Low-loss 50Ω coax cable RG8 and RG58 **Duplexers** from Diamond & MFJ for H/V/UHF operation **Filters** Narrow CW and SSB opt filters for Yaesu rigs **Flexi-whips** Large range of wide-band ants for H'helds **Headsets** Comfortable headphones c/w boom mics **Mounts** Magnetic, mobile and pole mounts **Pre-Owned** Great selection of pre-loved equipment **TET-Emtron YAGIS & BEAMS** for HF Dxing

**COM-CENTRE 400 Hillsborough Road AUCKLAND**

Ph (09)627-0084 Skype:comcentre-nz POBox 163-086 Lynfield  
Email: comcent@radioinfo.co.nz Website: www.radioinfo.co.nz

**South Island Distributor - Seekers Radio Comms 337 Lincoln Rd Ch'ch**  
Ph (03) 379-1919 Email: Seekers@radioinfo.co.nz

### CLUB COMMITTEE

President	Don MacDonald	ZL3DMC	03 327 7415
(Co-opt) Vice President	Mike Kennedy	ZL3AKZ	03 313 3646
Secretary	Colin Rowe	ZL3COL	03 313 2303
Treasurer	Denise Hider	ZL3HI	03 313 4907
AREC S/Leader	Don MacDonald	ZL3DMC/ZK9EG	03 327 7415
Ragchew Editor	Tony Buckland	ZL3HAM	03 312 5352
Committee	Bev Gillman	ZL3OV	03 313 7137
	Geoff Gillman	ZL3QR	03 313 7137
	Tony Buckland	ZL3HAM	03 312 5352
	Ron Kautz	ZL3RCK	03 312 8615
	Geoff Gooch	ZL3AL	03 920 2800
(Co-opt)	Owen Pimm	ZL3GM	03 310 6070

### SPECIAL INTEREST CONTACTS

AREC	Don MacDonald	ZL3DMC/ZK9EG	03 327 7415
Web Master	Ron Kautz	ZL3RCK	03 312 8615
Repeater Trustees			
6975	Mike Kennedy	ZL3AKZ	03 313 3646
	Brian Holland	ZL4WX	03 312 3344
675	Geoff Gillman	ZL3QR	03 313 7137
	Richard Smart	ZL4FZ	03 385 8355
ZL3RR	Geoff Gillman	ZL3QR	03 313 7137

### CALENDAR for 2016

#### General Meeting - Second Thursday at 1930 (7.30pm)

Jan	Feb	Mar	Apr	May	Jun	Jul	Aug	Sep	Oct	Nov	Dec
-						14	11	8	13	11	8

#### Committee Meeting - Fourth Thursday at 1930 (7.30pm)

Jan	Feb	Mar	Apr	May	Jun	Jul	Aug	Sep	Oct	Nov	Dec
						28	25	22	27	25	-

### Branch 68 Marketplace

#### FROM BRANCH 68

Coax RG58 (per metre) \$1.60

Enquiries to Geoff ZL3QR, phone (03) 313 7137

Club Monograms (cloth) \$9.00 - Club Badges (metal) \$6.50

Enquiries to Denise ZL3HI, phone (03) 313 4907

**\*\*SUBS DUE BY 30 APRIL\*\***

### Annual Subscriptions

\$40 Single, \$50 Family

Payment by instalments can be arranged with the Treasurer.

**Bank details for Internet payment. Please include your Callsign / Name.**

**ANZ Bank: 01 0877 0105044 00**

**PLEASE HELP THE CLUB and PAY PROMPTLY**